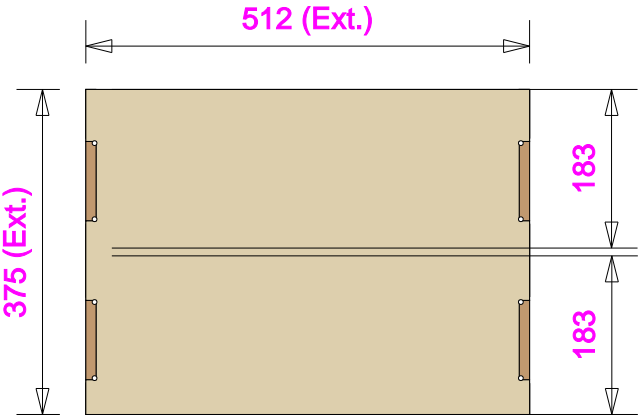




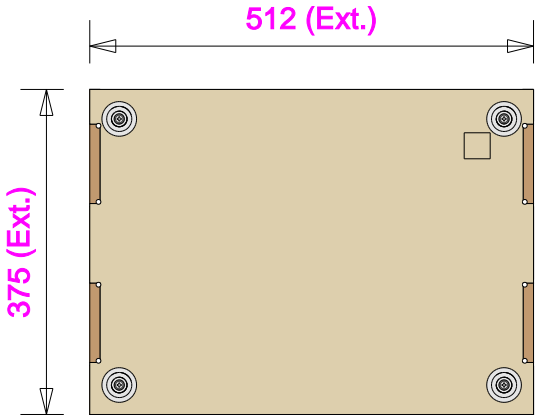
Part No  
94653-1

Drawn By  
Andy L

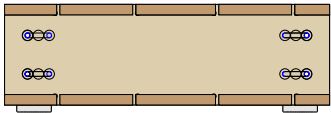
Plan



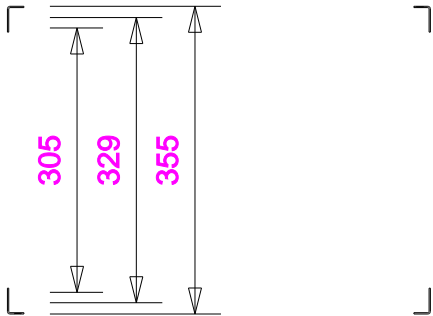
Underside



Left



Rack pitches.



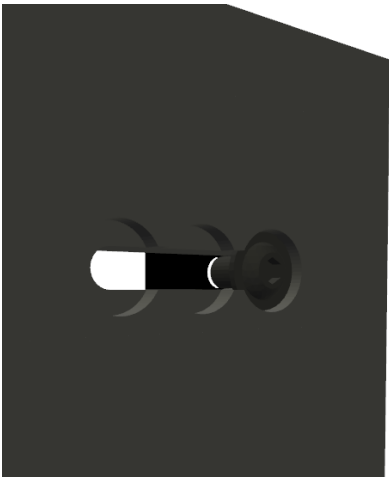
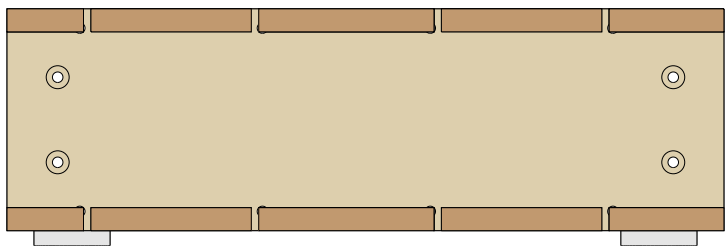


Part No  
94653-1

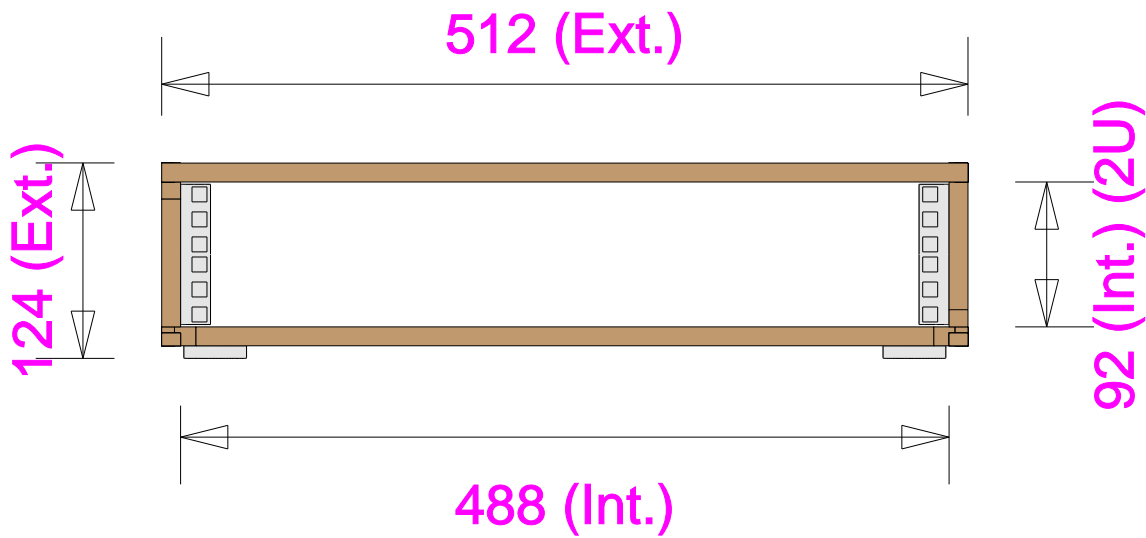
Drawn By  
Andy L

Right

Available rackstrip insets :  
10mm, 23mm & 35mm



Front



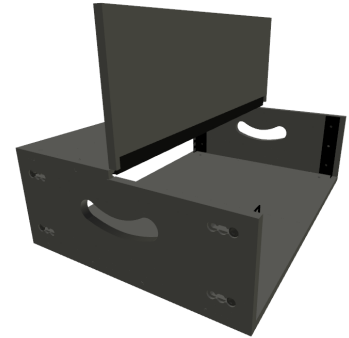
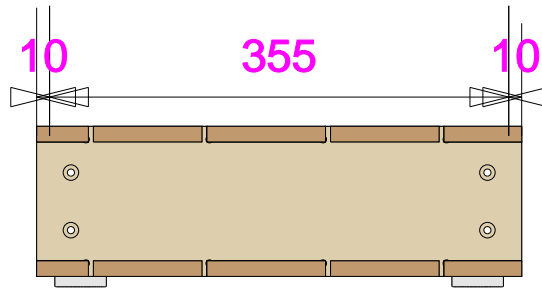
Rackstrip positions



**Part No**  
94653-1

**Drawn By**  
Andy L

### Hinged rear top panel



Rack Strip Set in From FRONT 10mm  
Rack Strip Set in From REAR 10mm